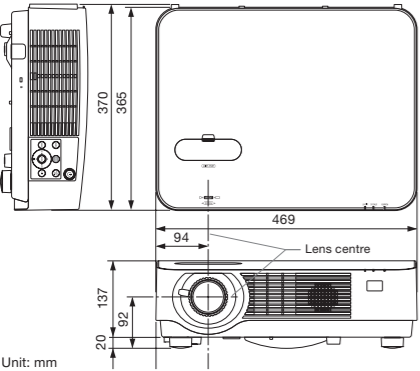


Specifications

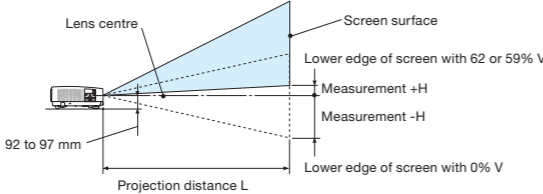
Model Number		NP-P502HL-2	NP-P502WL-2
Method		Reflection by single DMD chip	
Specifications of main parts			
Main panel	Size	0.65" (aspect ratio: 16:9)	0.65" (aspect ratio: 16:10)
	Pixels*1	(1,920 dots × 1,080 lines)	1,024,000 (1,280 dots × 800 lines)
Projection lenses	Zoom	Manual (zoom ratio 1.7)	
	Focus	Manual	
	Lens shifting	Manual (H: ±25%, V: +62%, −0%)	Manual (H: ±28%, V: +59%, −0%)
Light source		Blue laser diode	
Light source (laser diode) Life*2		20,000 hours	
Optical unit		C/W type (DLP), colour separation by colour wheel; time-multiplexing colour wheel method	
Light output *3*4	ECO mode off	5,000 lm	
	ECO 1 mode	Approx. 80%	
	ECO 2 mode	Approx. 50%	
Contrast ratio*4 (all white/all black)		20,000:1 with dynamic contrast	
Screen size		30 to 300 inches	
Colour reproducibility		10-bit signal processing (approx. 1.07 billion colours)	
Quietness (ECO2/ECO1/ECO mode off)		31 dB / 33 dB / 39 dB	
Synchronization rate	Horizontal	15 to 100 kHz (24 kHz or greater for RGB inputs)	
	Vertical	50 to 120 Hz	
Max. display resolution (horizontal × vertical)		Analogue: 1,920 × 1,200 (with Advanced AccuBlend) / Digital: 1,920 × 1,080 (with Advanced AccuBlend)	
Keystone correction	Horizontal	Manual (approx. ±25 degrees)	
	Vertical	Manual (approx. ±30 degrees)	
Input / output connectors			
Computer input		Mini D-Sub 15-pin × 1	
Audio input		Stereo mini jack × 1	
HDMI® input		TypeA 19-pin HDMI® connector (HDCP, audio) × 2	
HDBaseT™		RJ45 (Ethernet 100Base-TX / HDBaseT, audio) × 1	
Video input		RCA × 1	
Audio input		RCA × 2 (L/R)	
Computer output		Mini D-Sub 15-pin × 1	
Audio output		Stereo mini jack × 1	
PC control		D-Sub 9-pin × 1	
USB port		Type A for USB memory × 1, Type B for service × 1	
Ethernet port		RJ-45 (10/100Base-TX) × 1, W-LAN (USB type A) × 1 for wireless LAN unit	
3D SYNC		Synchronized signal output for 3D use × 1	
Built-in speaker		20 W monaural × 1	
Usage environment		Operating temperature: 5 to 40°C*, operating humidity: 20 to 80% (with no condensation) Storage temperature: −10 to 50°C, storage humidity: 20 to 80% (with no condensation) Operating altitude: 0 to 2,600 m (1700 to 2,600 m: Set [FAN MODE] to [HIGH])	
Power supply		100–240 V AC, 50/60 Hz	
Power consumption	ECO mode off	464 W (100–130 V) / 442 W (200–240 V)	
	ECO1	362 W (100–130 V) / 347 W (200–240 V)	
	ECO2	236 W (100–130 V) / 231 W (200–240 V)	
	STANDBY (NORMAL)	Less than 0.36 W	
	STANDBY (NETWORK)	Less than 2.3 W	
Rated input current		5.7–2.3 A	
Dimensions (W × H × D)		469 × 137 × 365 mm (net dimensions, not including protruding parts)	
Weight		8.7 kg (net weight)	

\*1: Effective pixels are more than 99.99%. \*2: Time at which the laser light source is at half brightness; not a guarantee time. \*3: Light output value when the [PRESET] mode is set to [HIGH-BRIGHT]. \*4: Compliant with ISO21118-2005. \*5: When surrounding temperature is 35–40°C, [PRESET] becomes [ECO] mode automatically. These specifications and the product's design are subject to change without notice.

Cabinet dimensions



Throw distance and screen size



P502HL-2 Full HD (Aspect ratio 16:9)

Screen size	Screen width (cm)	Screen height (cm)	Throw distance L (m)	Wide	Tele	Height H (cm)
30"	66.4	37.4	0.79	1.39	−18.7 – 4.3	
40"	88.6	49.8	1.07	1.86	−24.9 – 5.8	
50"	110.7	62.3	1.34	2.34	−31.1 – 7.2	
60"	132.8	74.7	1.62	2.81	−37.4 – 8.7	
80"	177.1	99.6	2.17	3.76	−49.8 – 11.6	
100"	221.4	124.5	2.72	4.71	−62.3 – 14.5	
120"	265.7	149.4	3.28	5.66	−74.7 – 17.4	
150"	332.1	186.8	4.11	7.08	−93.4 – 21.7	
200"	442.8	249.1	5.49	9.45	−124.5 – 28.9	
250"	553.4	311.3	6.87	11.82	−155.7 – 36.2	
300"	664.1	373.6	8.25	14.19	−186.8 – 43.4	

P502WL-2 WXGA (Aspect ratio 16:10)

Screen size	Screen width (cm)	Screen height (cm)	Throw distance L (m)	Wide	Tele	Height H (cm)
30"	64.6	40.4	0.81	1.42	−20.2 – 3.4	
40"	86.2	53.8	1.09	1.9	−26.9 – 4.6	
50"	107.7	67.3	1.37	2.39	−33.7 – 5.7	
60"	129.2	80.8	1.66	2.87	−40.4 – 6.9	
80"	172.3	107.7	2.22	3.84	−53.8 – 9.2	
100"	215.4	134.6	2.78	4.81	−67.3 – 11.5	
120"	258.5	161.5	3.35	5.78	−80.8 – 13.8	
150"	323.1	201.9	4.19	7.23	−101.0 – 17.2	
200"	430.8	269.2	5.6	9.65	−134.6 – 23	
250"	538.5	336.5	7.01	12.08	−168.3 – 28.7	
300"	646.2	403.9	8.43	14.5	−201.9 – 34.5	

\*Stated projection distances are standard values.  
\*The values in the tables are design values and may vary.



- This product is classified as Class 2 of IEC60825-1 Second edition 2007-03. The laser module is equipped in this product. DO NOT STARE INTO THE LENS WHILE IN USE
- The projector can be unplugged during its cool down period after it is turned off. Parts of the projector will become heated during operation. Use caution when picking up the projector immediately after it has been operating.
- Use caution when putting the projector in the soft case immediately after the projector has been operating. The projector cabinet is hot.

NEC is a registered trademark of NEC Corporation.  
MultiPresenter and Virtual Remote are the trademark of NEC Display Solutions, Ltd. in Japan, and other countries.  
Nav/Set is a trademark or registered trademark of NEC Display Solutions, Ltd. in Japan, the United States and other countries.  
DLP and the DLP logo are registered trademarks or trademarks of Texas Instruments. BrilliantColor™ is a trademark of Texas Instruments.  
SmartSource™ 3D is a trademark of Texas Instruments. Blu-ray is a trademark of the Blu-ray Disc Association.  
The terms HDMI and HDMI High-Definition Multimedia Interface, and the HDMI Logo are trademarks or registered trademarks of HDMI Licensing LLC in the United States and other countries.  
HDBaseT and the HDBaseT Alliance logo are trademarks of the HDBaseT Alliance.  
iOS is a trademark or registered trademark of Cisco in the United States and other countries and is used under license.  
Android is a trademark of Google Inc.  
Miracast is a trademark or registered trademark of Wi-Fi Alliance.  
CRESTRON and CRESTRON ROOMVIEW are trademarks or registered trademarks of Crestron Electronics, Inc.  
AMX is a trademark or registered trademark of AMX LLC in the United States and other countries.  
Trademark PJLink is a trademark applied for trademark right in the United States of America and other countries.  
All other trademarks are the property of their respective owners. The images in this brochure are samples. February 2017

NEC Display Solutions, Ltd.

P502HL-2 / P502WL-2

Remote control

(included accessory)



Options

Wireless LAN unit

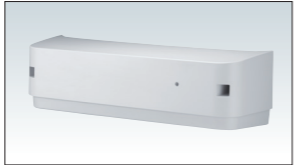
NP05LM1-5\*

\*The last digit may vary depending on the country of destination.



Cable cover

NP08CV



Multipurpose projector

Orchestrating a brighter world

NEC

The impressive compact 5,000 ANSI lumen projector with a state-of-the-art laser light source

P502HL-2 / P502WL-2



MultiPresenter

<http://www.nec-display.com/ap/>

Cat.No. WDPJ-1702-0021N

<b>5,000</b> ANSI lumens	<b>WXGA</b>	<b>8.7</b> kg
--------------------------	-------------	---------------