

# Epson EB-G7000WNL WXGA 3LCD Projector without Lens

Product Models displayed on this website may be available in certain regions only.

---



## PROJECT A WORLD OF POSSIBILITIES IN ANY ENVIRONMENT.

Epson high brightness EB-G7000W projector present a new perspective on clarity, durability, and versatility. With the advanced C2Fine™, projections are brought to life with vibrant colours in extreme resolution and vividness. Overcome the limitations of space constraints and project large and uncompromised images through the projector's astoundingly short throw ratio of 0.35\*.

*\* With optional ELPLX01 zero offset ultra-short throw lens.*

- High Brightness
- Powered Lens
- Portrait Projection
- Flexible Installation
- Edge Blending
- Point Correction

## Download CAD Drawing



### Overview

#### Bright and Colorful

Features 6500 lumens of color brightness (color light output)<sup>1</sup> and 6500 lumens of white brightness (white light output)<sup>1</sup>.

#### Portrait Mode

Allows you to turn the projector 90 degrees – great for digital signage, fashion shows, art galleries and museums

#### 360-Degree Installation

Can be rotated in any direction for flexible, off-axis positioning – great for projecting on the ceiling or floor or as part of a rear-projection system.

#### Edge Blending

Use multiple projectors to overlap images, and there are no bright spots where the overlap occurs – providing dynamic, seamless projection.

#### Enhanced Image Quality

##### Brighter, More Colourful Images

The single 400W lamp produces up to 8,000 lumens of light to deliver dazzling high-definition images, ideal for large auditoriums, lecture halls and conference rooms. Epson's advanced optical engine system ensures no compromise on colour intensity even at high brightness levels. This means you can captivate your audience with bright vibrant colours in any environment with Epson's colour management capability.

##### Vivid Contrast Brings Images to Life

Differences in brightness from image to image can result in loss of details. Epson's Auto Iris feature changes that by offering an incredible 50,000:1 contrast ratio, automatically adjusting images for optimal clarity. In combination with C2Fine™ technology, the EB-G7000W consistently delivers stunning vivid images with exceptional contrast for truly inspiring presentations.

##### Frame Interpolation

Enjoy clearer, sharper playback even on fast-moving subjects with Epson's Frame Interpolation Technology. This unique function effectively eliminates motion blurring by inserting intermediate frames between images to create smoother motion transition.

##### Colour Adjustment

With the colour adjustment function, you can easily adjust the hue, saturation and brightness for each component of RGBCMY to match your preferences.

### DICOM Mode

This colour mode produces images with clear shadows, ideal for projecting X-rays and other medical images\*.

\* This projector series is not a medical device and cannot be used for actual medical diagnosis.

### Super-resolution Technology

Epson's super-resolution technology delivers razor-sharp images even when projecting low-resolution content onto large screens. And with image data processed frame by frame, even rapid motion remains crisp.

### **Resilient Durability**

#### Longer Projector Lifespan

By combining Epson's proprietary C2Fine™ (Crystal Clear Fine) Technology, inorganic LCD panels and Epson's optimised cooling system, the Epson EB-G7000W is able to guarantee up to 20,000 hours or 3 years (whichever comes first) of long-lasting performance, even for 24/7 continuous usage. They deliver high quality bright images and operate on low noise, making them ideal for meeting rooms, lecture halls, museums and any other venues.

### **Versatile Projections and Placements**

#### Powered Lens with Stepping Motor

The powered lens with stepping motor offers limitless possibilities in projector placement. Covering a wide range of angles, the motorised lens shift gives you a great deal of flexibility when installing the projector. The newly adopted stepping motor lets you make highly precise adjustments when employing edge blending, stacking and other techniques. Adjustments can also be made via remote control or over a network, enhancing usability even for ceiling-mounted projectors.

#### Lens-position Memory

With storage for up to 10 settings in the projector memory, including shift positions, focus and projection sizes, you can easily and quickly adjust the projector according to the aspect ratio of content simply by using either the remote controller or command control.

#### Zero Offset, Ultra-short Throw Lens

A revolutionary invention of Epson, this powerful lens is especially useful for environments with extremely limited lens-to-screen distances. The short throw ratio of 0.35 with zero-offset and the projector's front-mounted exhaust system means you can project onto 100-inch screens even from as near as 74cm away. When combined with lens shift (+17% vertically, ±10% horizontally), these features simplify usage where space is at a premium.

#### Extensive Lens Options

The Epson EB-G7000W projector offers an extensive line-up of optional lens to fit any venue or subject. And with the new ELPLX01 zero offset, ultra-short throw lens, you can install the projector even in tight spaces.

#### Split Screen

Display images from two different sources side by side on the same screen for a more effective presentation. In video conferences, for example, images of presentation materials and remote participants can be shown simultaneously. In addition, split screen display between two digital interfaces is now possible with the EB-G7000W projector.

#### Portrait and 360° Projection

The new portrait mode allows you to place your projector on its side with no impact to its performance, enabling you to project your images vertically without compromising on image quality. This makes it ideal for the projection of advertisements and digital signage. And with 360° projection, you can project images from any angle, so there's no limitation, whatever the space restrictions.

#### Projection on Wide Curved and Corner Spaces

Fit your projection images nicely even on non-flat surfaces. Create stunning projection images on wide curved surfaces and corner walls, ideal for advertisements and marketing promotions.

#### Borderless Multi Projection

Offering a variety of functions for multi-projector installations, the EB-G7000W projector lets you adjust brightness, colour and the position of overlapping areas for seamless, beautiful displays. There is also an Auto Scaling function for easy multi-projector displays and an Advanced Edge Blending function for more precise edge-blending adjustment.

#### Colour Matching/Brightness Level

Enjoy uniform colour and brightness even when using multiple projectors.

### Advanced Edge Blending

Precisely adjust edge blending to combine multiple edges for a seamless, unified look. This function allows you to fine-tune the start position and edge width of the blend as well as the area of the black level in the blend. It also prevents the main subject from being overlapped. As a tip, you can reduce the size of the overlapping areas to decrease the time it takes to combine multiple images.

### Point Correction

Easily correct single-projector distortion or multi-projector misalignment directly on the screen. Quickly fine-tune the images by adjusting point by point from right to left, top to bottom, using a projected maximum 17x17 matrix.

### Auto Scaling

This revolutionary function simplifies the complicated scaling of images from multiple projectors so you can do it easily. Just select the screen layout from the pre-set menu and the projector automatically sets the slice area, scaling and edge-blend position.

### Black Level

Experience uniform black levels in overlapping areas of images even when using multiple projectors.

### **Wide Range of Connectivity**

The EB-G7000W projector is compatible with a wide range of external devices, and additional ports now include DVI-D, HDMI and HDBaseT. Ideal for large venues, HDBaseT can transmit Full HD video, audio and Ethernet at low cost through cat 5e/6 cables up to 100 metres.

### **Ease of Maintenance**

#### EasyMP Monitor and Message Broadcasting

With Epson's network monitoring and control software, you can see from a single PC which projectors are available and whether they are running efficiently – even across the biggest network. You can configure your projectors and access their serial numbers remotely, as well as receive instant email alerts for pre-defined critical indicators such as non-functioning devices or overheating lamps. Now you can send messages or announcements as JPEG files simultaneously to any number of projectors on a network. This makes the EB-G7000 projector series very useful for immediate communication needs or even emergencies.

### Web Control

By connecting your projector to a network, you can adjust your projector installation entries from a PC or smart device.

### **Auto Power On**

With the auto power on function, your projector will automatically turn on once the projection signal is detected, providing you with an easy and hassle-free presentation.

### **Better Products for a Better Future™**

For more information on Epson's environmental programmes, visit <http://global.epson.com/SR/environment>

## What's In The Box:

---

Power Cable  
Computer Cable (VGA Cable)  
Remote Control  
Cable Cover  
User's Manual CD-ROM

---

## Specifications



## Projection Technology:

**Projection Technology:**

RGB liquid crystal shutter projection system (3LCD)

**Main Parts Specification:**

---

**LCD:**

Size: 0.76" panel with MLA (D10, C2 Fine)

Native Resolution: WXGA (1280 x 800)

**Brightness<sup>2</sup>:**

---

**White Light Output (Normal/Eco):**

6,500lm / 5,915lm

**Colour Light Output:**

6,500lm

**Connectivity:**

---

**Network:**

Wired LAN RJ45 x 1 (100Mbps)

Wireless Optional

**Analog Input:**

D-Sub 15 pin: 1 (Blue)

**Digital Input:**

DVI-D: 1

HDBaseT (RX): RJ45 x 1 (with HDCP 2.2)

HDMI: 1 (with HDCP 2.2)

**Output Terminal:**

D-Sub 15Pin 1

**Audio Input:**

Stereo Mini Jack 3

**Audio Output:**

Stereo Mini Jack 1

**Control I/O:**

RS-232C D-sub 9pin x 1

Remote Stereo Mini Jack x 1

**Others:**

USB Type A 1 (Wireless LAN, Firmware Update, Copy OSD settings)

USB Type B 1 (Firmware Update, Copy OSD settings)

**Projection Lens:**

---

**Type:**

Power Zoom / Power Focus / Power Shift

**Focal Length:**

24.0 - 38.2 mm

**Zoom Ratio:**

1 - 1.6

**F-number:**

1.7 - 2.3

## Contrast Ratio:

---

**Contrast Ratio:**

50,000:1

## Wireless Specifications (Wireless LAN: Built-in):

---

**Supported Speed for Each Mode:**

IEEE 802.11b: 11Mbps\*3

IEEE 802.11g: 54Mbps\*3

IEEE 802.11n: 130Mbps\*3

**Wireless Security:**

WPA-PSK / WPA2-PSK(TKIP/AES) WPA2-PSK(AES)

## Screen Size (Projected Distance):

---

**Zoom : Wide:**

50" - 300" [1.53 - 9.43 m]

**Zoom : Tele:**

50" - 300" [2.48 - 15.10 m]

## Geometric Correction:

---

**Vertical/Horizontal Keystone:** $\pm 45^\circ$  /  $\pm 30^\circ$  ( Zoom: Tele with Standard Zoom Lens)**Curve Surface:**

Yes

**Corner Wall:**

Yes

**Point Correction:**

Yes

**Quick Corner:**

Yes

## Operating Temperature:

---

**Operating Temperature:**

0 - 45 °C <32 - 113 °F> (Below 1,500m / 4,921ft)

0 - 40 °C <32 - 104 °F> [Above 1,500m / 4,921ft - 3,048m / 10,000ft (with high altitude mode)]

0 - 35 °C <32 - 95 °F> [Above 3,048m / 10,000ft - 5,000m / 16,404ft (with high altitude mode)]

20% - 80% humidity, no condensation

**Operating Altitude:**

---

**Operating Altitude:**

0 - 5,000m (0 - 16,404 ft) (over 1,500m / 4,921ft with high altitude mode)

**Start-Up Period:**

---

**Start-Up Period:**

About 15 seconds, Warm-up Period: 30 seconds

**Cool Down Period:**

---

**Cool Down Period:**

Instant off

**Internal Speaker(s):**

---

**Sound Output:**

10W x 1

**Dimension Excluding Feet (W x H x D):**

---

**Dimension Excluding Feet (W x H x D):**

525 x 164 x 425 mm

**Weight:**

---

**Weight:**

12.9kg

**Air Filter:**

---

**Type:**

High Efficiency Filter

**Maintenance Cycle:**

15,000 hours\*4

**Fan Noise:**

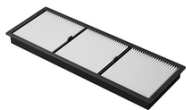
Fan Noise (Normal / Eco):  
35dB / 31dB

Power Consumption (220 - 240V):

Lamp On (Normal/Eco):  
515W / 477W

Stand By (Network On / Off):  
2.3W / 0.3W

Accessories



Air Filters



Connectivity



Control Systems



Lamp



Lenses

Support

Recommended Links:

- Drivers & Downloads
- Manuals and Warranty
- Registration
- Contact Support



**Notes:**

\*1 Lamp life will vary depending upon mode selected, environmental conditions and usage. Lamp brightness decreases over time.

\*2 Colour brightness (colour light output) and white brightness (white light output) will vary depending on usage conditions. Colour light output measured in accordance with IDMS 15:4; white light output measured in accordance with ISO 21118.

\*3 Maximum speed and range is achievable when used with same enhanced mode technology. Actual data rates, features and performance may vary depending on your computer system, the environment and other factors.

\*4 When used in the general office environment (the amount of floating dust: 0.04 - 0.2 mg/m<sup>3</sup>). Based on the Epson's in-house test results.

**Copyright © 2021 Epson Malaysia Sdn Bhd. All rights reserved.**