

# Pro L1505UHNL WUXGA 3LCD Laser Projector with 4K Enhancement Without Lens

Contact Us

800-442-1977

Mon-Fri 7am-5pm PT

---



## Premium large-venue laser projector with 4K Enhancement<sup>1</sup>.

The Pro L1505UHNL combines a laser light source, inorganic components and 3LCD technology for powerful, uncompromising images. This premium large-venue projector features native WUXGA performance with Epson® 4K Enhancement Technology<sup>1</sup>. Delivering 12,000 lumens of color/white brightness<sup>2</sup>, the Pro L1505UHNL offers bright, vivid color, while its laser light source engine and electrostatic air filter provide virtually maintenance-free operation for up to 20,000 hours<sup>3</sup>. This sleek, black projector includes Edge Blending and 360-degree projection for a variety of installation applications. Its integration capabilities include 3G-SDI and HDBaseT™ connectivity, plus nine optional powered lenses (sold separately).

**Projection System:** High-aperture Epson 3-chip 3LCD

**Native Resolution:** WUXGA (1920 x 1200) w/ 4K Enhancement Technology<sup>1</sup>

**Color Brightness:** 12,000 lumens<sup>2</sup>

**White Brightness:** 12,000 lumens<sup>2</sup>

## Throw Distance Calculator

Model: V11H910820

### Overview

#### Bright and Colorful

Features 12,000 lumens of color brightness (color light output)<sup>1</sup> and 12,000 lumens of white brightness (white light output)<sup>1</sup>

#### Laser Light Source

Epson Projectors with Laser Light Source can operate for up to 20,000 hours virtually maintenance free.

#### 4K Enhancement

##### Technology

Epson's 4K Enhancement Technology delivers astonishing picture quality — every subtle intricacy is captured.

#### 3G-SDI

Allows for the transmission of uncompressed digital video signals. Interface allows for a 328-foot cable length.

#### HDBaseT

Combines HDMI, ethernet and RS-232 into one cable

- **Bright, vivid color** — 12,000 lumens color/white brightness<sup>2</sup>
- **Exceptional Full HD widescreen display** — native WUXGA (1920 x 1200) with 4K Enhancement<sup>1</sup> for presentations, videos, digital signage and more
- **Solid-state laser light source** — virtually maintenance-free 20,000-hour laser light source with no lamps<sup>3</sup>
- **Dynamic projection capabilities** — advanced built-in Edge Blending, image warping and curved-surface correction technologies for a variety of applications
- **Advanced connectivity** — 3G-SDI, HDBaseT, HDMI®, DVI-D, VGA, 5-BNC and Stereo Mini
- **Nine optional interchangeable lenses (sold separately)** — with powered lens shift and lens memory
- **Installation flexibility** — 360-degree projection and Portrait Mode for added versatility
- **Remote management and control tools** — included software allows for web-based monitoring and control of Epson networked projectors
- **Image correction camera** — automatically adjusts color and brightness to match other projectors in multiple-screen applications
- **Brightness lock feature** — allows users to securely set maximum brightness level

## Eco Features

- RoHS compliant
- Recyclable product<sup>4</sup>
- Epson America, Inc. is a SmartWay<sup>SM</sup> Transport Partner<sup>5</sup>

### Better Products for a Better Future™

For more information on Epson's environmental programs, go to [www.epson.com/environment](http://www.epson.com/environment)

## Large Venue Projectors

### Redefine big-screen projection with the Epson Pro Series

Epson offers a full suite of high-performance projectors designed for virtually any large-venue application each with innovative advanced 3-chip projection technology, interchangeable lenses, extraordinary image quality and incredible brightness.

## Transform any venue

Whatever your venue or application, Epson offers a projector made to meet your needs.

### Markets



#### Corporate

Deliver impressive big-screen productions, Pro L projectors are ideal for virtually any application, whether in a lobby, meeting space, museum or visitor center.



#### Higher Education

Turn ordinary venues into areas for extraordinary experiences. Engage students and transform your auditorium, gymnasium, theater or lecture hall. Special education pricing is available.



#### Live Events

Built to handle the rigors of staging and live events, Epson large-venue projectors feature sealed optics, hanging frames, mechanical shutters, removable interface boards, a wide array of lenses and more.

# Epson Pro Series Projectors - Comparison Chart



Pro L149 UNL  
Pro L150 UNL  
Pro L151 UNL  
Pro L152 UNL  
Pro L153 UNL  
Pro L154 UNL  
Pro L155 UNL  
Pro L156 UNL  
Pro L157 UNL  
Pro L158 UNL  
Pro L159 UNL  
Pro L160 UNL  
Pro L161 UNL  
Pro L162 UNL  
Pro L163 UNL  
Pro L164 UNL  
Pro L165 UNL  
Pro L166 UNL  
Pro L167 UNL  
Pro L168 UNL  
Pro L169 UNL  
Pro L170 UNL  
Pro L171 UNL  
Pro L172 UNL  
Pro L173 UNL  
Pro L174 UNL  
Pro L175 UNL  
Pro L176 UNL  
Pro L177 UNL  
Pro L178 UNL  
Pro L179 UNL  
Pro L180 UNL  
Pro L181 UNL  
Pro L182 UNL  
Pro L183 UNL  
Pro L184 UNL  
Pro L185 UNL  
Pro L186 UNL  
Pro L187 UNL  
Pro L188 UNL  
Pro L189 UNL  
Pro L190 UNL  
Pro L191 UNL  
Pro L192 UNL  
Pro L193 UNL  
Pro L194 UNL  
Pro L195 UNL  
Pro L196 UNL  
Pro L197 UNL  
Pro L198 UNL  
Pro L199 UNL  
Pro L200 UNL



Also available in WHITE		
Pro L1490UNL	Pro L1500UHNL	
Brightness		
Resolution		
9,000 lumens	12,000 lumens	15,000 lumens
Light Source		
3LCD		
Native WUXGA (1920x1200)	Native WUXGA (1920x1200)	Native SXGA (1400x900)

4K Enhancement

Laser, 20,000 hours	Laser, 20,000 hours	Laser,
	3G-SDi	
	Color	
✓	✓	
✓	✓	
✓	✓	
Black	Black	

See Our Large Venue  
Projectors in Action

[See all Case Studies](#)



## MASARY Studios

Collaborative Public Art  
Reimagined

**WATCH VIDEO ►**

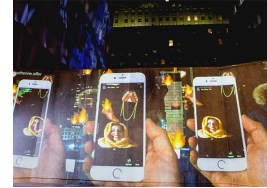


## BASE Hologram

Holograms

**WATCH VIDEO ►**

**LEARN MORE ►**



## Illuminus Festival

Artists + Technology

**WATCH VIDEO ►**

## What's In The Box:

---

- Pro L1505UHNL projector
- Power cable
- Projector remote control with batteries
- Cable cover
- HDMI clamp

---

## Specifications



## Specifications Projector:

---

**Projection System:**

High-aperture Epson 3-chip, 3LCD technology

**Projection Method:**

Front / rear / ceiling mount

**Driving Method:**

Epson Poly-silicon TFT Active Matrix

**Pixel Number:**

2,304,000 dots (1920 x 1200) x 3

**Color Brightness - Color Light Output:**

12000 lumens<sup>2</sup>

**White Brightness - White Light Output:**

12000 lumens<sup>2</sup>

**Aspect Ratio:**

Supports 4:3, 16:9, 16:10

**Resolution:**

1920 x 1200 (WUXGA)

**Resize:**

1280 x 1024, 1400 x 1050

**Brightness Uniformity:**

(typical) 90%

**Pixel Arrangement:**

Cross stripe

**Throw Ratio Range:**

(For Standard Lens Only) 1.57 — 2.56

**Size - projected distance:**

60" – 500"

**Contrast Ratio:**

2,500,000:1

**Color Reproduction:**

Up to 1 billion colors

**Light Source Life:**

- Normal: 20,000 hours<sup>3</sup>
- Extended: 30,000 hours<sup>3</sup>

## Effective Scanning Frequency Range:

---

**Pixel Clock, Horizontal, Vertical:**Pixel Clock

- 13.5 MHz – 162 MHz (up to UXGA 60 Hz)

Horizontal

- 15 KHz – 92 KHz

Vertical

- 50 Hz – 85 Hz

**Horizontal:**

15 kHz – 92 kHz

**Vertical:**

50 Hz – 85 Hz

## General:

---

**Temperature:**

32° to 113° F (0° to 45° C)

**Operating Temperature:**

32 ° to 113 °F (0 ° to 45 ° C)

**Weight:**

52.2 lb (with standard lens, not included)

**Security:**

- Security cable hole
- Lens lock
- Kensington® lock provision,

## Projection Lens:

---

**Type:**

(For Standard Lens, Not Included) Powered shift/focus / zoom

**F-number:**

(For Standard Lens, Not Included) 1.8 – 2.35

**Focal Length:**

(For Standard Lens, Not Included) 36.0 – 57.35 mm

**Zoom Ratio:**

(For Standard Lens, Not Included) Optical zoom 1 – 1.61

**Lens Shift:**

Vertical: ±60%; horizontal: ±18%

## Projector Details:

---

**Input Signal:**

NTSC/NTSC4.43/PAL/M-PAL/N-AL/PAL60/ SECAM/480i/576i/480p/576p/720p/1080i/1080p/UHD/4K

**Interfaces:**

- 3G-SDI x 1
- DVI-D x 1
- HDMI x 1
- HDBaseT x 1
- 5-BNC
- VGA x 1
- Audio in: Mini Stereo x 3
- Variable audio out: Mini Stereo x 1
- USB connector Type B x 1: For service only
- USB connector Type A x 1: For wireless only



- Monitor out: Mini D-sub 15 pin x 1
- Serial: RS-232c x 1

Fan Noise:

- Normal mode: 37 dB
- Quiet mode: max. 30 dB

Projector Dimensions:

Including feet - with standard lens:  
23.1" x 19.4" x 8.3" (W x D x H)

Remote Control:

Features:

Power, search selection, lens shift, zoom, focus, test pattern selection, A/V Mute, freeze, user ID, auto, aspect, Color Mode, help, menu, enter, esc and standby

Operating Distance:

49 ft

Operating Angle:

- Right/left: Front: ± 60 degrees, Rear: ± 30 degrees
- Upper/lower: Front: ± 20 degrees, Rear: +10 to +50 degrees

Power:

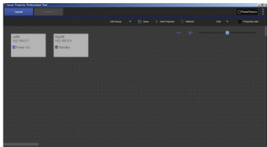
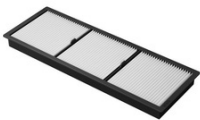
Power Supply Voltage:

100 – 240 V ±10%, 50/60 Hz AC

Power Consumption:

- Normal mode: 955 W
- ECO mode: 597 W
- Communication on: 2.0W standby
- Communication off: 0.3 W standby

Accessories



[Air Filters](#)[Cables](#)[Connectivity](#)[Control Systems](#)[Lenses](#)[Support](#)

## Need Support?

Get the latest drivers, FAQs, manuals and more for your Epson product.

### Recommended Links:

[Drivers & Downloads](#)[FAQs](#)[Manuals and Warranty](#)[Registration](#)[Contact Support](#)

### Notes:

<sup>1</sup> 4K Enhancement Technology shifts each pixel diagonally by 0.5 pixels to double the resolution and surpass Full HD image quality.

<sup>2</sup> Color brightness (color light output) and white brightness (white light output) will vary depending on usage conditions. Color light output measured in accordance with IDMS 15.4; white light output measured in accordance with ISO 21118.

<sup>3</sup> No required maintenance for the light source and filter up to 20,000 hours. Approximate time until brightness decreases 50% from first usage. Measured by acceleration test assuming use of 0.04 - 0.20 mg/m3 of particulate matter. Time varies depending on usage conditions and environment. Replacement of parts other than the light source may be required in a shorter period. The projector has a limited warranty of 3 years or 20,000 hours, whichever comes first.

<sup>4</sup> For convenient and reasonable recycling options, visit [www.epson.com/recycle](http://www.epson.com/recycle)

<sup>5</sup> SmartWay is an innovative partnership of the U.S. Environmental Protection Agency that reduces greenhouse gases and other air pollutants and improves fuel efficiency.

