

Pro L1060UNL WUXGA 3LCD Laser Projector with 4K Enhancement

Contact Us

800-442-1977

Mon-Fri 7am-5pm PT



Premium, compact large-venue laser projector with 4K Enhancement¹

The powerful Pro L1060UNL, part of Epson's most compact interchangeable-lens laser projector series, offers 3-chip 3LCD technology and native WUXGA resolution with 4K Enhancement Technology¹ (1920 x 1200 x 2). Delivering extraordinary color brightness, Epson® 3LCD projectors ensure brilliant images. Providing 6,000 lumens of color brightness and 6,000 lumens of white brightness², the L1060UNL's laser light source and air filter offer virtually maintenance-free operation up to 20,000 hours³. With a high contrast ratio and BT.709 color space, it produces sharp, true-to-life images. And, it offers 11 optional interchangeable lenses.

Model: V11H941920

Overview

Ultra bright

6,000 lumens color/white brightness² from a compact large-venue laser projector

Exceptional widescreen display

native WUXGA with 4K Enhancement Technology¹ (1920 x 1200 x 2); accepts 4K content and provides up to 4.6 million pixels onscreen

Vibrant, true-to-life images

with Epson 3-chip 3LCD technology

Worry-free operation

solid-state laser light source and air filter provide virtually maintenance-free operation for up to 20,000 hours³

11 optional interchangeable lenses

with powered lens shift and lens memory, including an ultra short-throw lens with zero offset

Lifelike images

high contrast ratio and BT.709 color space for exceptional clarity and detail

- **Dynamic projection capabilities** — advanced built-in Edge Blending, image warping and shape overlay features for a variety of applications; direct playback from USB storage media
- **Simplified installation features** — full 360-degree mounting, wide lens shift, versatile connectivity; inputs including HDBaseT™ and HDMI® (HDCP 2.2)
- **Customized performance** — brightness modes to maximize light source life and provide a consistent brightness level
- **Multi-projector setup software** — free software controls networked projectors and gives access to warping and edge blending
- **Web- or network-based remote management** — control and monitor projector status

Eco Features

- RoHS compliant
- Recyclable product⁴
- Epson America, Inc. is a SmartWay™ Transport Partner⁵

Better Products for a Better Future™

For more information on Epson's environmental programs, go to www.epson.com/environment

What's In The Box:

- Pro L1060UNL projector
- power cable
- cable cover
- projector remote control with batteries
- Quick Setup Sheet

Specifications



Specifications Projector:

Projection System:

High-aperture Epson® 3LCD, 3-chip technology

Projection Method:

Front/rear/ceiling mount

Driving Method:

Poly-silicon TFT Active Matrix

Native Resolution:

WUXGA with 4K Enhancement¹ (1920 x 1200 x 2)

Resolution on Screen:

WUXGA with 4K Enhancement¹/ 4.6 million pixels¹

Pixel Number in Device:

2,304,000 pixels (1920 x 1200) x 3 chips

Signal Input:

Maximum Display Resolution: 4096 x 2160 (resizing display)

Display Resolution: 1920 x 1200 pixels

Color Brightness - Color Light Output:

6,000 lumens²

White Brightness - White Light Output:

6,000 lumens²

Aspect Ratio:

Supports 4:3, 16:9, 16:10

Brightness Uniformity:

85%

Pixel Arrangement:

Cross stripe

Keystone Correction:

Vertical: ±45 degrees; horizontal: ±30 degrees

Contrast Ratio:

2,500,000:1 (Dynamic Contrast: On)

Color Reproduction:

Up to 1.07 billion colors

Light Source Life:

20,000 hours (Normal)³

Illumination Technology:

Laser Phosphor

General:

Operating Temperature:

32 ° to 113 ° F (0 ° to 45 ° C)

Weight:

34.4 lb without lens

Security:

Security cable hole, Kensington lock provision

Projection Lens:

Type:

Powered shift/focus/zoom (ELPLM08 Lens)

F-number:

1.7 – 2.3 (ELPLM08 Lens)

Focal Length:

24.0 mm – 38.2 mm (ELPLM08 Lens)

Zoom Ratio:

Optical zoom 1 – 1.6x (ELPLM08 Lens)

Throw Ratio Range:

1.44 – 2.33 (ELPLM08 Lens)

Lens Shift:

Vertical: ± 67 percent; Horizontal: ± 30 percent (ELPLM08 Lens)

Projector Details:

Input Signal:

Input Video Signal (HDMI, DVI-D and HDBaseT ports) 480i/480p/576i/576p/720p/1080i/1080p/3840 x 2160/ 4096 x 2160

Interfaces:

- DVI-D x 1
- HDMI (HDCP 2.2) x 1
- HDBaseT x 1
- 5-BNC, VGA x 1
- Audio in: Mini Stereo x 3
- Variable audio out: Mini Stereo x 1
- USB connector Type B x 1: For service only
- USB connector Type A x 1: For wireless LAN, service, content playback
- Monitor out: Mini D-sub 15-pin x 1
- Serial: RS-232c x 1
- Remote Stereo Mini x 1
- Wired LAN: RJ45

Fan Noise:

34 dB (Normal Mode); 32 dB (Medium Mode) 30 dB (Quiet Mode)

Projector Dimensions:

Including feet - with standard lens:

21.5" x 7.4" x 19.1" (545 x 189 x 484 mm)

Remote Control:

Features:

Power, source search selection, lens shift, zoom, focus, test pattern selection, A/V Mute, freeze, user ID, auto, aspect, color mode, number, page up and down, E-zoom, volume, menu, enter, esc and pointer functions

Operating Distance:

98 ft

Operating Angle:

- Right/left: Front: ± 60 degrees; Rear: ± 30 degrees
- Upper/lower: Front: + 30 to - 20 degrees; Rear: +50 to + 10 degrees

Power:

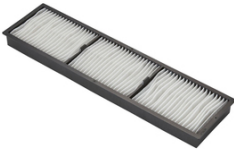
Power Supply Voltage:

100 – 240 V ±10%, 50/60 Hz AC

Power Consumption:

361 W (Normal Mode), 263 W (Extended Mode), 2W (Network Standby), 0.5 W (Energy Saving)

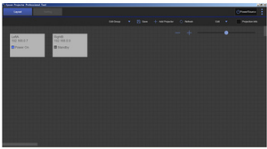
Accessories



Air Filters



Connectivity



Control Systems



Lenses



Mounts

Support

Need Support?

Recommended Links:

Drivers & Downloads

Get the latest drivers, FAQs, manuals and more for your Epson product.

[FAQs](#)[Manuals and Warranty](#)[Registration](#)[Contact Support](#)

Notes:

¹ 4K Enhancement Technology shifts each pixel to surpass Full HD resolution on screen.

² Color brightness (color light output) and white brightness (white light output) will vary depending on usage conditions. Color light output measured in accordance with IDMS 15.4; white light output measured in accordance with ISO 21118.

³ No required maintenance for the light source and filter up to 20,000 hours. Approximate time until brightness decreases 50% from first usage. Measured by acceleration test assuming use of 0.04 - 0.20 mg/m³ of particulate matter. Time varies depending on usage conditions and environment. Replacement of parts other than the light source may be required in a shorter period.

⁴ For convenient and reasonable recycling options, visit www.epson.com/recycle

⁵ SmartWay is an innovative partnership of the U.S. Environmental Protection Agency that reduces greenhouse gases and other air pollutants and improves fuel efficiency.

© 2021 Epson America, Inc.