

DISCONTINUED

# Pro L1060U WUXGA 3LCD Laser Projector with 4K Enhancement

---



## Premium, compact large-venue laser projector with 4K Enhancement<sup>1</sup>

The powerful Pro L1060U, part of Epson's most compact interchangeable-lens laser projector series, offers 3-chip 3LCD technology and native WUXGA resolution with 4K Enhancement Technology<sup>1</sup> (1920 x 1200 x 2). Delivering extraordinary color brightness, Epson® 3LCD projectors ensure brilliant images. Providing 6,000 lumens of color brightness and 6,000 lumens of white brightness<sup>2</sup>, the L1060U's laser light source and air filter offer virtually maintenance-free operation up to 20,000 hours<sup>3</sup>. With a high contrast ratio and BT.709 color space, it produces sharp, true-to-life images. And, it offers 11 optional interchangeable lenses (standard lens included; ELPLM08).

**Model:** V11H941020

Overview

Ultra bright  
6,000 lumens color/white  
brightness<sup>2</sup> from a compact

Exceptional widescreen  
display

Vibrant, true-to-life  
images

large-venue laser projector

native WUXGA with 4K Enhancement Technology<sup>1</sup> (1920 x 1200 x 2); accepts 4K content and provides up to 4.6 million pixels onscreen

with Epson 3-chip 3LCD technology

### Worry-free operation

solid-state laser light source and air filter provide virtually maintenance-free operation for up to 20,000 hours<sup>3</sup>

### 11 optional

#### interchangeable lenses

with powered lens shift and lens memory, including an ultra short-throw lens with zero offset (standard lens included; ELPLM08)

### Lifelike images

high contrast ratio and BT.709 color space for exceptional clarity and detail

- **Dynamic projection capabilities** — advanced built-in Edge Blending, image warping and shape overlay features for a variety of applications; direct playback from USB storage media
- **Simplified installation features** — full 360-degree mounting, wide lens shift, versatile connectivity; inputs including HDBaseT™ and HDMI® (HDCP 2.2)
- **Customized performance** — brightness modes to maximize light source life and provide a consistent brightness level
- **Multi-projector setup software** — free software controls networked projectors and gives access to warping and edge blending
- **Web- or network-based remote management** — control and monitor projector status

## Eco Features

- RoHS compliant
- Recyclable product<sup>4</sup>
- Epson America, Inc. is a SmartWay™ Transport Partner<sup>5</sup>

### Better Products for a Better Future™

For more information on Epson's environmental programs, go to [www.epson.com/environment](http://www.epson.com/environment)

## What's In The Box:

- Pro L1060U projector
- a lens
- power cable
- cable cover
- projector remote control with batteries
- Quick Setup Sheet

## Specifications

## Specifications Projector:

---

**Projection System:**

High-aperture Epson® 3LCD, 3-chip technology

**Projection Method:**

Front/rear/ceiling mount

**Driving Method:**

Poly-silicon TFT Active Matrix

**Native Resolution:**

WUXGA with 4K Enhancement<sup>1</sup> (1920 x 1200 x 2)

**Resolution on Screen:**

WUXGA with 4K Enhancement<sup>1</sup>/ 4.6 million pixels<sup>1</sup>

**Pixel Number in Device:**

2,304,000 pixels (1920 x 1200) x 3 chips

**Signal Input:**

Maximum Display Resolution: 4096 x 2160 (resizing display)

Display Resolution: 1920 x 1200 pixels

**Color Brightness - Color Light Output:**

6,000 lumens<sup>2</sup>

**White Brightness - White Light Output:**

6,000 lumens<sup>2</sup>

**Aspect Ratio:**

Supports 4:3, 16:9, 16:10

**Brightness Uniformity:**

85%

**Pixel Arrangement:**

Cross stripe

**Contrast Ratio:**

2,500,000:1 (Dynamic Contrast: On)

**Color Reproduction:**

Up to 1.07 billion colors

**Light Source Life:**

20,000 hours (Normal)<sup>3</sup>

**Illumination Technology:**

Laser Phosphor

## General:

---

**Operating Temperature:**

32 ° to 113 ° F (0 ° to 45 ° C)

**Weight:**

34.4 lb without lens

**Security:**

Security cable hole, Kensington lock provision

## Projection Lens:

---

**Type:**

Powered shift/focus/zoom (ELPLM08 Lens)

**F-number:**

1.7 – 2.3 (ELPLM08 Lens)

**Focal Length:**

24.0 mm – 38.2 mm (ELPLM08 Lens)

**Zoom Ratio:**

Optical zoom 1 – 1.6x (ELPLM08 Lens)

**Throw Ratio Range:**

1.44 – 2.33 (ELPLM08 Lens)

**Lens Shift:**

Vertical: ±67 percent; Horizontal: ±30 percent (ELPLM08 Lens)

## Projector Details:

---

**Input Signal:**

Input Video Signal (HDMI, DVI-D and HDBaseT ports) 480i/480p/576i/576p/720p/1080i/1080p/3840 x 2160/ 4096 x 2160

**Interfaces:**

- DVI-D x 1
- HDMI (HDCP 2.2) x 1
- HDBaseT x 1
- 5-BNC, VGA x 1
- Audio in: Mini Stereo x 3
- Variable audio out: Mini Stereo x 1
- USB connector Type B x 1: For service only
- USB connector Type A x 1: For wireless LAN, service, content playback
- Monitor out: Mini D-sub 15-pin x 1
- Serial: RS-232c x 1
- Remote Stereo Mini x 1
- Wired LAN: RJ45

**Fan Noise:**

34 dB (Normal Mode); 32 dB (Medium Mode) 30 dB (Quiet Mode)

## Projector Dimensions:

---

**Including feet - with standard lens:**

21.5" x 7.4" x 19.1" (545 x 189 x 484 mm)

## Remote Control:

---

**Features:**

Power, source search selection, lens shift, zoom, focus, test pattern selection, A/V Mute, freeze, user ID, auto, aspect, color mode, number, page up and down, E-zoom, volume, menu, enter, esc and pointer functions

**Operating Distance:**  
98 ft

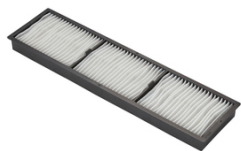
- Operating Angle:**
- Right/left: Front: ± 60 degrees; Rear: ± 30 degrees
  - Upper/lower: Front: + 30 to - 20 degrees; Rear: +50 to + 10 degrees

**Power:**

**Power Supply Voltage:**  
100 – 240 V ±10%, 50/60 Hz AC

**Power Consumption:**  
361 W (Normal Mode), 263 W (Extended Mode), 2W (Network Standby), 0.5 W (Energy Saving)

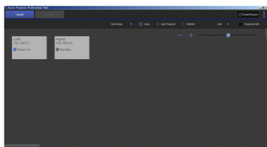
Accessories



Air Filters



Connectivity



Control Systems



Lenses



Mounts

Support

Need Support?

Get the latest drivers, FAQs, manuals and more for your Epson product.

Recommended Links:

- Drivers & Downloads
- FAQs
- Manuals and Warranty
- Registration
- Contact Support

---

## Notes:

<sup>1</sup> 4K Enhancement Technology shifts each pixel to surpass Full HD resolution on screen.

<sup>2</sup> Color brightness (color light output) and white brightness (white light output) will vary depending on usage conditions. Color light output measured in accordance with IDMS 15.4; white light output measured in accordance with ISO 21118.

<sup>3</sup> No required maintenance for the light source and filter up to 20,000 hours. Approximate time until brightness decreases 50% from first usage. Measured by acceleration test assuming use of 0.04 - 0.20 mg/m<sup>3</sup> of particulate matter. Time varies depending on usage conditions and environment. Replacement of parts other than the light source may be required in a shorter period.

<sup>4</sup> For convenient and reasonable recycling options, visit [www.epson.com/recycle](http://www.epson.com/recycle)

<sup>5</sup> SmartWay is an innovative partnership of the U.S. Environmental Protection Agency that reduces greenhouse gases and other air pollutants and improves fuel efficiency.

© 2021 Epson America, Inc.