

DISCONTINUED

Pro L1505UH WUXGA 3LCD Laser Projector with 4K Enhancement With Lens



Premium large-venue laser projector with 4K Enhancement¹.

The Pro L1505UH combines a laser light source, inorganic components and 3LCD technology for powerful, uncompromising images. This premium large-venue projector features native WUXGA performance with Epson® 4K Enhancement Technology¹. Delivering 12,000 lumens of color/white brightness², the Pro L1505UH offers bright, vivid color, while its laser light source engine and electrostatic air filter provide virtually maintenance-free operation for up to 20,000 hours³. This sleek, black projector includes Edge Blending and 360-degree projection for a variety of installation applications. Its integration capabilities include 3G-SDI and HDBaseT™ connectivity, plus nine optional powered lenses (ships with ELPLM15 lens).

Projection System: High-aperture Epson 3-chip 3LCD

Native Resolution: WUXGA (1920 x 1200) w/ 4K Enhancement Technology¹

Color Brightness: 12,000 lumens²

White Brightness: 12,000 lumens²

Throw Distance Calculator

Model: V11H910120

Overview

Bright and Colorful

Features 12,000 lumens of color brightness (color light output)¹ and 12,000 lumens of white brightness (white light output)¹

Laser Light Source

Epson Projectors with Laser Light Source can operate for up to 20,000 hours virtually maintenance free.

4K Enhancement Technology

Epson's 4K Enhancement Technology delivers astonishing picture quality — every subtle intricacy is captured.

3G-SDI

Allows for the transmission of uncompressed digital video signals. Interface allows for a 328-foot cable length.

HDBaseT

Combines HDMI, ethernet and RS-232 into one cable

- **Bright, vivid color** — 12,000 lumens color/white brightness²
- **Exceptional Full HD widescreen display** — native WUXGA (1920 x 1200) with 4K Enhancement¹ for presentations, videos, digital signage and more
- **Solid-state laser light source** — virtually maintenance-free 20,000-hour laser light source with no lamps³
- **Dynamic projection capabilities** — advanced built-in Edge Blending, image warping and curved-surface correction technologies for a variety of applications
- **Advanced connectivity** — 3G-SDI, HDBaseT, HDMI®, DVI-D, VGA, 5-BNC and Stereo Mini
- **Nine optional interchangeable lenses** — with powered lens shift and lens memory (ships with ELPLM15 lens)
- **Installation flexibility** — 360-degree projection and Portrait Mode for added versatility
- **Remote management and control tools** — included software allows for web-based monitoring and control of Epson networked projectors
- **Image correction camera** — automatically adjusts color and brightness to match other projectors in multiple-screen applications
- **Brightness lock feature** — allows users to securely set maximum brightness level

Eco Features

- RoHS compliant
- Recyclable product⁴
- Epson America, Inc. is a SmartWaySM Transport Partner⁵

Better Products for a Better Future™

For more information on Epson's environmental programs, go to www.epson.com/environment

What's In The Box:

- Pro L1505UH projector
- ELPLM15 lens
- Power cable
- Projector remote control with batteries
- Cable cover

- HDMI clamp

Specifications

Specifications Projector:

Projection System:

High-aperture Epson 3-chip, 3LCD technology

Projection Method:

Front / rear / ceiling mount

Driving Method:

Epson Poly-silicon TFT Active Matrix

Pixel Number:

2,304,000 dots (1920 x 1200) x 3

Color Brightness - Color Light Output:

12000 lumens²

White Brightness - White Light Output:

12000 lumens²

Aspect Ratio:

Supports 4:3, 16:9, 16:10

Resolution:

1920 x 1200 (WUXGA)

Resize:

1280 x 1024, 1400 x 1050

Brightness Uniformity:

(typical) 90%

Pixel Arrangement:

Cross stripe

Throw Ratio Range:

(For Standard Lens Only) 1.57 — 2.56

Size - projected distance:

60" – 500"

Contrast Ratio:

2,500,000:1

Color Reproduction:

Up to 1 billion colors

Light Source Life:

- Normal: 20,000 hours³
- Extended: 30,000 hours³

Effective Scanning Frequency Range:

Pixel Clock, Horizontal, Vertical:Pixel Clock

- 13.5 MHz – 162 MHz (up to UXGA 60 Hz)

Horizontal

- 15 KHz – 92 KHz

Vertical

- 50 Hz – 85 Hz

General:

Temperature:

32° to 113° F (0° to 45° C)

Operating Temperature:

32 ° to 113 ° F (0 ° to 45 ° C)

Weight:

52.2 lb (with standard lens)

Security:

- Security cable hole
- Lens lock
- Kensington® lock provision,

Projection Lens:

Type:

(For Standard Lens) Powered shift/focus / zoom

F-number:

(For Standard Lens Only) 1.8 – 2.35

Focal Length:

(For Standard Lens Only) 36.0 – 57.35 mm

Zoom Ratio:

(For Standard Lens Only) Optical zoom 1 – 1.61

Projector Details:

Input Signal:

NTSC/NTSC4.43/PAL/M-PAL/N-AL/PAL60/ SECAM/480i/576i/480p/576p/720p/1080i/1080p/UHD/4K

Interfaces:

- 3G-SDI x 1
- DVI-D x 1
- HDMI x 1
- HDBaseT x 1
- 5-BNC
- VGA x 1
- Audio in: Mini Stereo x 3
- Variable audio out: Mini Stereo x 1
- USB connector Type B x 1: For service only

- USB connector Type A x 1: For wireless only
- Monitor out: Mini D-sub 15 pin x 1
- Serial: RS-232c x 1

Fan Noise:

- Normal mode: 37 dB
- Quiet mode: max. 30 dB

Projector Dimensions:

Including feet - with standard lens:
23.1" x 19.4" x 8.3" (W x D x H)

Remote Control:

Features:

Power, search selection, lens shift, zoom, focus, test pattern selection, A/V Mute, freeze, user ID, auto, aspect, Color Mode, help, menu, enter, esc and standby

Operating Distance:
49 ft

Operating Angle:

- Right/left: Front: ± 60 degrees, Rear: ± 30 degrees
- Upper/lower: Front: ± 20 degrees, Rear: +10 to +50 degrees

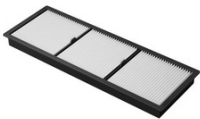
Power:

Power Supply Voltage:
100 – 240 V ±10%, 50/60 Hz AC

Power Consumption:

- Normal mode: 955 W
- ECO mode: 597 W

Accessories



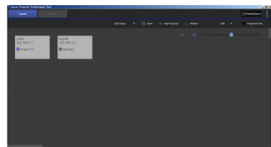
Air Filters



Cables



Connectivity



Control Systems



Lenses

Support



Need Support?

Get the latest drivers, FAQs, manuals and more for your Epson product.

Recommended Links:

[Drivers & Downloads](#)

[FAQs](#)

[Manuals and Warranty](#)

[Registration](#)

[Contact Support](#)

Notes:

¹ 4K Enhancement Technology shifts each pixel diagonally by 0.5 pixels to double the resolution and surpass Full HD image quality.

² Color brightness (color light output) and white brightness (white light output) will vary depending on usage conditions. Color light output measured in accordance with IDMS 15.4; white light output measured in accordance with ISO 21118.

³ No required maintenance for the light source and filter up to 20,000 hours. Approximate time until brightness decreases 50% from first usage. Measured by acceleration test assuming use of 0.04 - 0.20 mg/m³ of particulate matter. Time varies depending on usage conditions and environment. Replacement of parts other than the light source may be required in a shorter period. The projector has a limited warranty of 3 years or 20,000 hours, whichever comes first.

⁴ For convenient and reasonable recycling options, visit www.epson.com/recycle

⁵ SmartWay is an innovative partnership of the U.S. Environmental Protection Agency that reduces greenhouse gases and other air pollutants and improves fuel efficiency.

