

5,000 ANSI Lumens WUXGA Laser Installation Projector

LS750WU



- 5,000 ANSI Lumens offering bright images in any environment
- 2nd generation Laser Phosphor technology with 20,000 hours lifespan
- 360° projection and 1.3x optical zoom for flexible installation
- Cost-effective compact size
- Throw ratio match for a hassle-free equipment upgrade

The ViewSonic LS750WU is a 5,000 ANSI Lumens WUXGA laser projector for installation. Adopting the 2nd generation laser phosphor technology, it offers high and consistent brightness for a reliable light source life of 20,000 hours. 1.3x optical zoom and 360° projection make for satisfying flexibility. In addition, the compact size and throw ratio match for a hassle-free equipment upgrade, ensuring the desired cost-effectiveness. The LS750WU serves as a reliable projector to ensure your installations are smooth and sound, especially ideal for medium-to-large meeting/training rooms and public displays.

High Brightness

Packed with 5,000 ANSI Lumens, it is guaranteed to produce high levels of brightness suitable for large spaces with a lot of ambient light.

**5,000
ANSI Lumens**



Ultra-high Contrast Ratio

Boasting a 3,000,000:1 ultra-high contrast ratio, even the finest shades of color are enhanced – a key characteristic for delivering razor-sharp images.

3M:1 Contrast Ratio



Normal

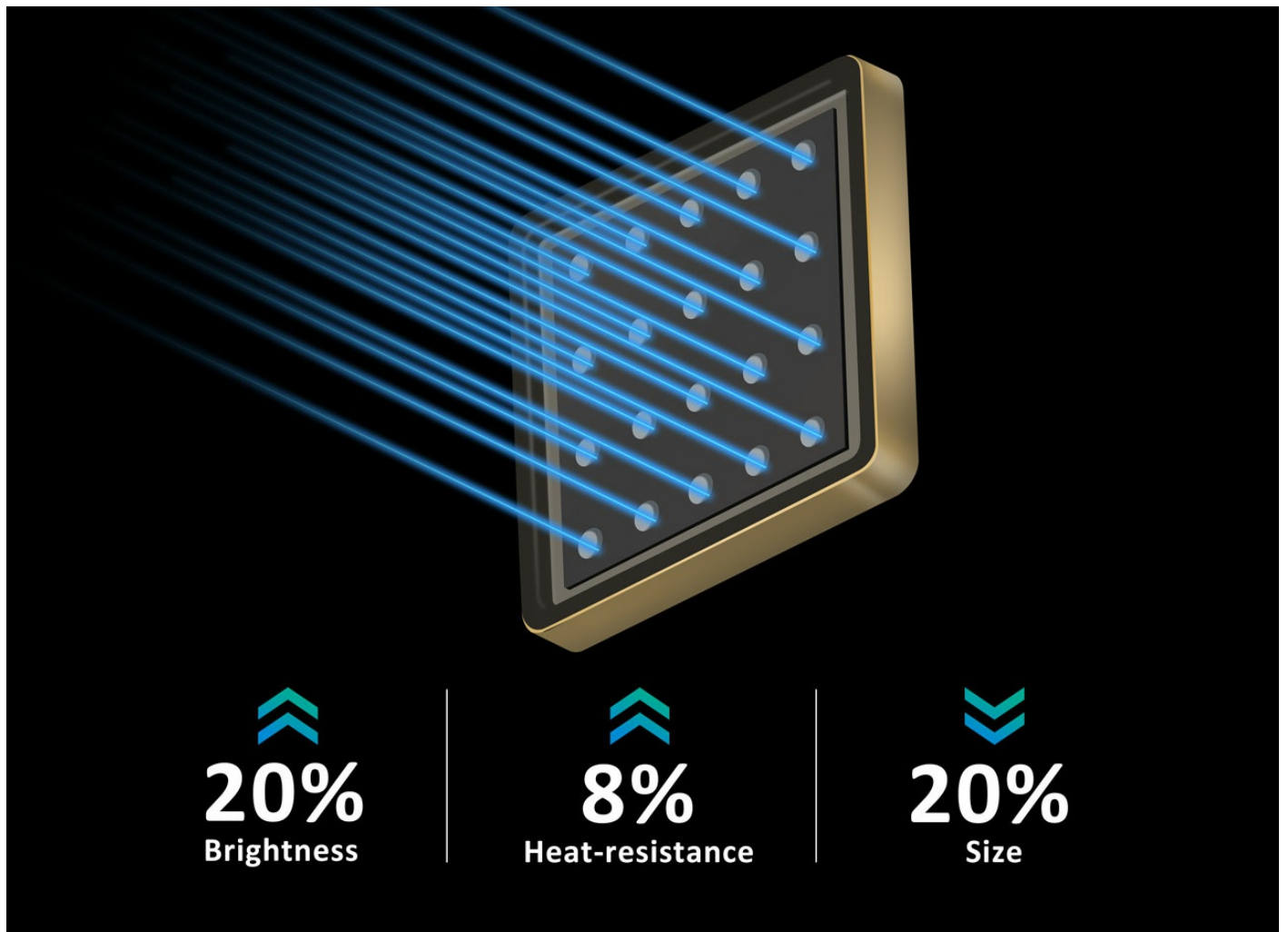


3000000:1

2nd Generation Laser Phosphor Technology

The ViewSonic new laser projector adopts the 2nd generation laser phosphor technology. In addition to inheriting excellent color performance, lamp-free design, and instant on/off switch from the previous generation, technology on the new generation improves around 20% of brightness, better heat-resistance, and a smaller module design, making the images consistent in ambient settings as well as increased reliability with a more compact size for extended use in various scenarios.

2nd Generation Laser Phosphor Technology



Long-lasting Lifespan

Laser technology offers a lifespan up to 20,000 hours (4 hours per day for more than 13 years), delivering reliable long-term performance with no degradation in brightness over time so that your installations are consistently vibrant.

20,000 hours
Lifespan



Adaptable to any environment

Equipped with a 1.3x optical zoom lens, the projector provides mounting flexibility with a wider throw distance range.

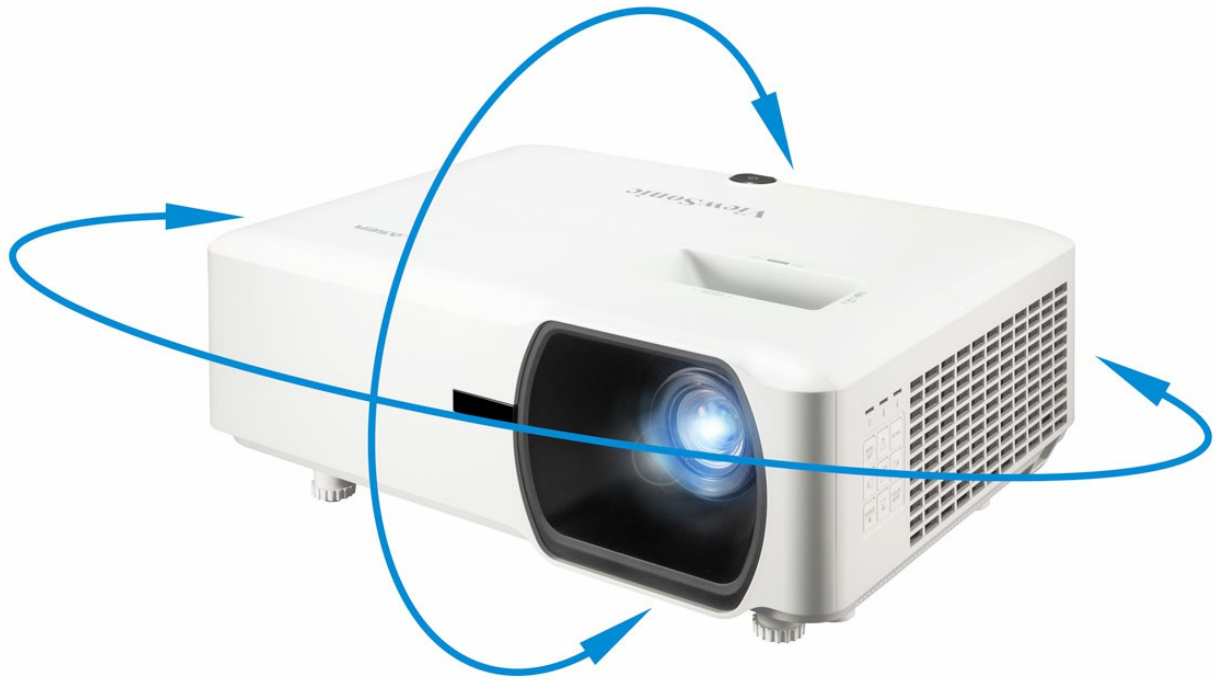
1.3x Optical Zoom



360° Creative Applications

The projector can freely rotate at any angle vertically to aid with creative applications, allowing projection onto ceilings, walls, or angled signage.

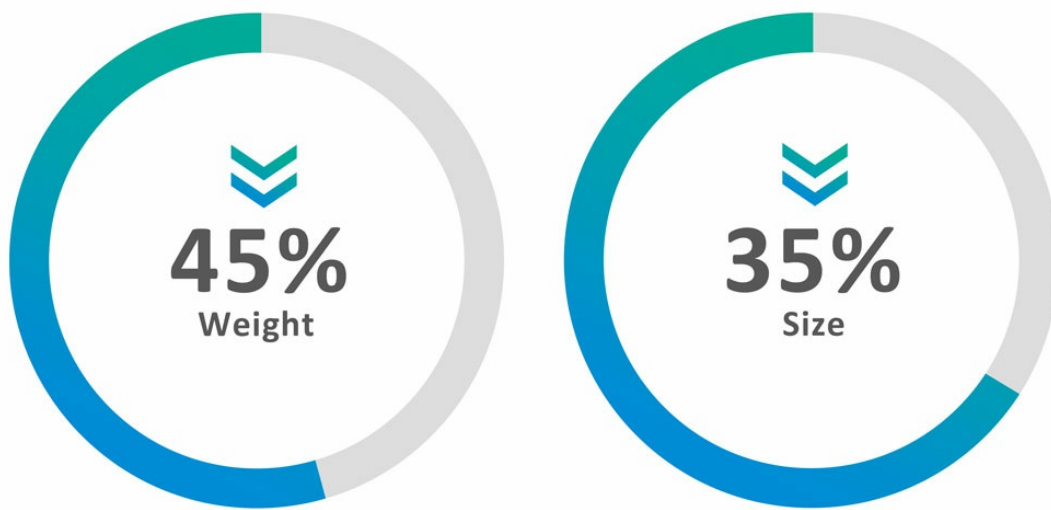
**360-degree
Projection**



Lighter Weight and Compact Size

It is almost half the weight and 35% smaller in size when compared with its predecessor, which reduces the cost of transportation and enhances the ease of installation.

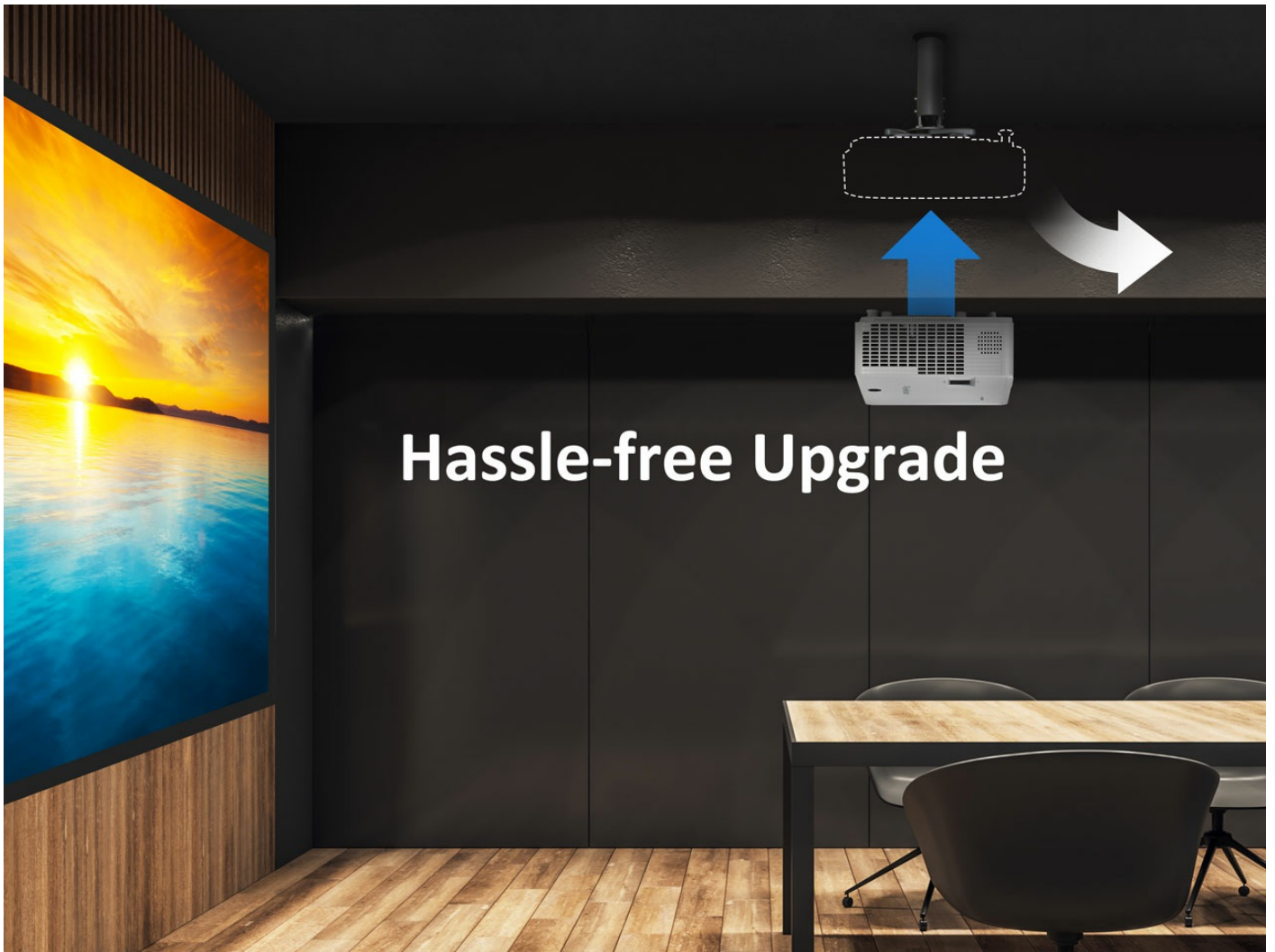
Lighter Weight
Compact Size



Matching throw ratio for a hassle-free upgrade

With a throw ratio matching mainstream WUXGA installation conditions, the projector can be fitted to an existing ceiling mount and project an image within a pre-installed screen, perfect for a hassle-free equipment upgrade.

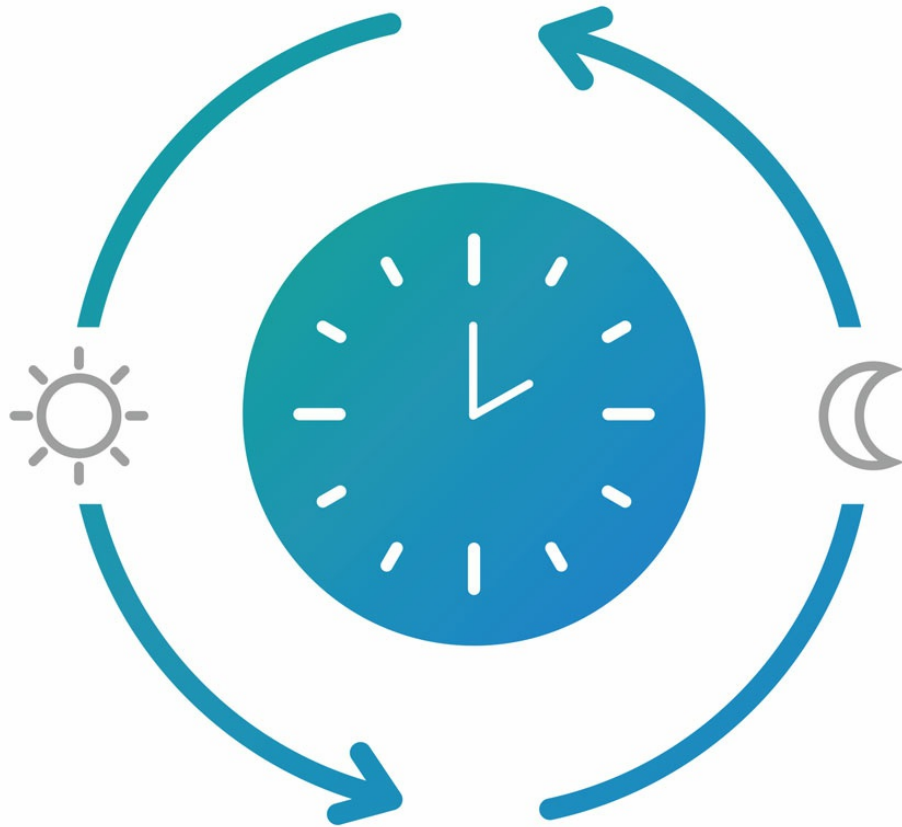
1.13-1.47 Throw Ratio



Non-stop 24/7 Operation

With an advanced cooling design, it enables 24/7 operation without degradation of quality or performance, making the projector ideal for applications that require continuous projection.

24/7 Operation



Network Management

This projector comes equipped with Control 4, Crestron, AMX, Extron and ViewSonic vController, an easy-to-use network management tool.

**The Control 4 driver will be built into the device in advance and get certification once it has finished the verification process.*

LAN Control



256
Projectors



A Simpler Way to Update Projector Software

ViewSonic Projector Software Update is available online and gives you the ability to keep your projector firmware up to date easily and conveniently with your laptop and USB cable connection; no need to take your projector into a service center for software updates.

**The latest projector software update can be found in the download section at the bottom of the page when available.*

Projector Software Update

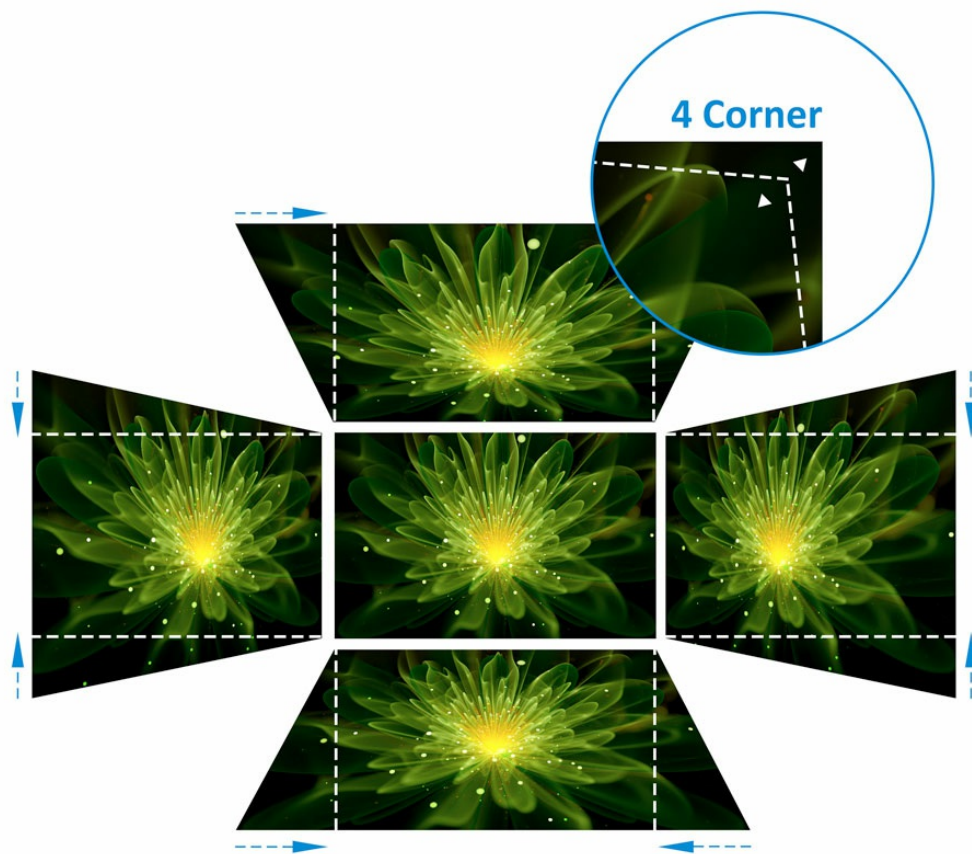


Easy Image Adjustment

Horizontal and Vertical Keystone correction along with 4 corner adjustment features eliminate crooked or distorted images for a perfectly proportioned picture every time.

H/V Keystone

4 Corner Adjustment



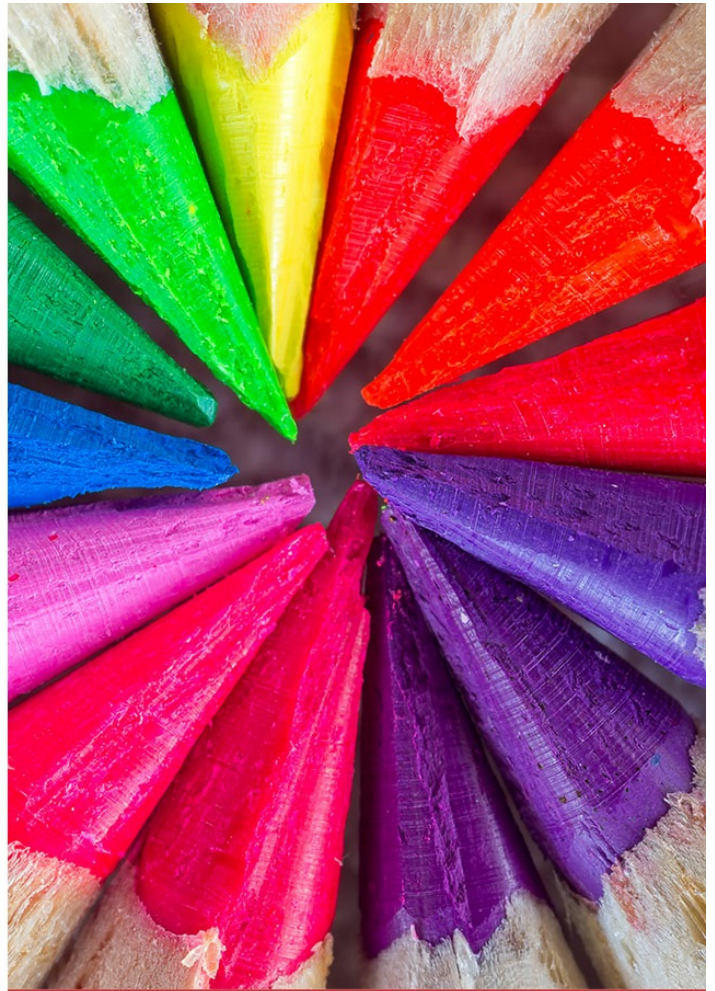
Amazing Color Accuracy

ViewSonic's proprietary SuperColor™ Technology displays a wide color range, ensuring that users enjoy a true-to-life color performance in both bright and dark environments without sacrificing image quality.

SuperColor™
Technology



Normal



SuperColor™ Technology

Sealed Optical Engine with IP5X

The advanced sealed optical engine prevents dust and moisture from entering the projector and affecting the thermal system to ensure that the image quality and long lifespan are maintained.

IP5X

IP5X

Optical Engine



Reduced Energy Consumption

When no signal has been detected, the projector will automatically power off to conserve energy and therefore prolong its lifespan.

Auto Power Off



Energy Efficiency

Power Saving Mode allows users to extend the projector's lifespan and minimize energy consumption. When in Power Saving Mode, the projector will automatically switch into SuperEco Mode whenever there is no signal input detected.

Power saving



Normal

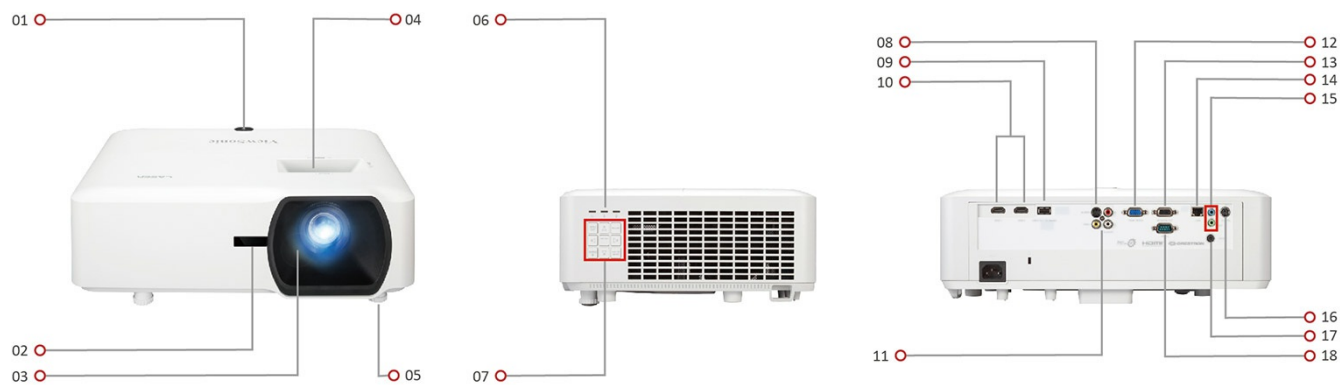
0 min



SuperEco® Mode

5 min

Exterior & Rear I/O Connectors



1. Power Key & IR
2. Front IR
3. Lens
4. Zoom/Focus Ring
5. Adjustment Foot
6. LED Indicator
7. Keypad
8. S-Video
9. USB Type A(5V/1.5A)
10. HDMI X 2
11. Composite
12. Computer In
13. Monitor Out
14. LAN
15. Audio In & Out
16. 3D VESA
17. 12V OUT
18. RS-232

Technical Specifications

Specification	Projection System	0.48" WUXGA
	Native Resolution	1920x1200
	DMD Type	DC3
	Brightness	5000 ANSI Lumens
	Contrast Ratio	3000000:1
	Display Color	1.07 Billion Colors
	Light Source Type	Laser Phosphor system
	Light Source Life (Normal)	up to 20000
	Lamp Watt	Nichia 67W x2
	Lens	F=1.94-2.06, f=12-15.6mm
	Projection Offset	100%+/-5%
	Throw Ratio	1.13-1.47
	Optical Zoom	1.3X
	Digital Zoom	0.8x-2.0x
	Image Size	30"-300"
	Throw Distance	0.73-9.50m, (100"@2.43m)
	Keystone	H: +/-40° , V: +/-40°
	Audible Noise (Normal)	35dB
	Audible Noise (Eco)	28dB
	Input Lag	16ms
	Resolution Support	VGA(640 x 480) to WUXGA(1920 x 1200)
	HDTV Compatibility	480i, 480p, 576i, 576p, 720p, 1080i, 1080p
	Video Compatibility	NTSC, PAL, SECAM
	Horizontal Frequency	15K-102KHz
	Vertical Scan Rate	23-120Hz
Input	Computer in (share with component)	1

	Composite	1
	S-Video	1
	HDMI	2, (HDMI 1.4a/HDCP1.4 x2)
	Audio-in (3.5mm)	1
	Audio-in (RCA R/L)	1
	3D VESA (Sync)	1
	RJ45 Input	1 , (LAN control)
Output	Monitor out	1
	Audio out (3.5mm)	1
	Speaker	10W x2
	USB Type A (Power)	1 (5V/ 1.5A), (share with service)
	12V Trigger (3.5mm)	1 (3.5mm)
Control	RS232 (DB 9-pin male)	1
	RJ45	1
	USB Type A (Services)	1 (share with USB A Output)
Others	Power Supply Voltage	100-240V+/- 10%, 50/60Hz, (AC in)
	Power Consumption	Normal: 430W, Standby: <0.5W
	Operating Temperature	0~40°C
	Net Weight	5.9kg
	Dimensions (WxDxH) with Adjustment Foot	405x305x145mm
	OSD Language	English, French, Spanish, Thai, Korean, German, Italian, Russian, Swedish, Dutch, Polish, Czech, T-Chinese, S-Chinese, Japanese, Turkish, Portuguese, Finnish, Indonesian, India, Arabic, Vietnamese, Greek, total 23 languages
Standard Accessory	Power Cord	1
	VGA Cable	1
	Remote Control	1 , (w/ laser pointer)
	QSG	1